

Package leaflet: Information for the user

TREVICTA 175 mg prolonged release suspension for injection
TREVICTA 263 mg prolonged release suspension for injection
TREVICTA 350 mg prolonged release suspension for injection
TREVICTA 525 mg prolonged release suspension for injection
paliperidone

Read all of this leaflet carefully before you start using this medicine because it contains important information for you.

- Keep this leaflet. You may need to read it again.
- If you have any further questions, ask your doctor, pharmacist or nurse.
- If you get any side effects, talk to your doctor, pharmacist or nurse. This includes any possible side effects not listed in this leaflet. See section 4.

What is in this leaflet

1. What TREVICTA is and what it is used for
2. What you need to know before you use TREVICTA
3. How to use TREVICTA
4. Possible side effects
5. How to store TREVICTA
6. Contents of the pack and other information

1. What TREVICTA is and what it is used for

TREVICTA contains the active substance paliperidone which belongs to the class of antipsychotic medicines and is used as a maintenance treatment for the symptoms of schizophrenia in adult patients.

If you have responded well to treatment with paliperidone palmitate injection given once a month, your doctor may start treatment with TREVICTA.

Schizophrenia is a disease with “positive” and “negative” symptoms. Positive means an excess of symptoms that are not normally present. For example, a person with schizophrenia may hear voices or see things that are not there (called hallucinations), believe things that are not true (called delusions), or feel unusually suspicious of others. Negative means a lack of behaviours or feelings that are normally present. For example, a person with schizophrenia may appear withdrawn and may not respond at all emotionally or may have trouble speaking in a clear and logical way. People with this disease may also feel depressed, anxious, guilty, or tense.

TREVICTA can help alleviate the symptoms of your disease and reduce the chance of your symptoms coming back.

2. What you need to know before you use TREVICTA

Do not use TREVICTA

- if you are allergic to paliperidone or any of the other ingredients of this medicine (listed in section 6).
- if you are allergic to another antipsychotic medicine including the substance risperidone.

Warnings and precautions

Talk to your doctor, pharmacist or nurse before using TREVICTA.

This medicine has not been studied in elderly patients with dementia. However, elderly patients with dementia, who are treated with other similar types of medicine, may have an increased risk of stroke or death (see section 4).

All medicines have side effects and some of the side effects of this medicine can worsen the symptoms of other medical conditions. For that reason, it is important to discuss with your doctor any of the following conditions which can potentially worsen during treatment with this medicine:

- if you have Parkinson's disease
- if you have ever been diagnosed with a condition whose symptoms include high temperature and muscle stiffness (also known as Neuroleptic Malignant Syndrome)
- if you have ever experienced twitching or jerking movements that you cannot control in your face, tongue, or other parts of your body (Tardive Dyskinesia)
- if you know that you have had low levels of white blood cells in the past (which may or may not have been caused by other medicines)
- if you are diabetic or prone to diabetes
- if you have had breast cancer or a tumour in the pituitary gland in your brain
- if you have a heart disease or heart disease treatment that makes you prone to low blood pressure
- if you have low blood pressure when you stand up or sit up suddenly
- if you have a history of seizures
- if you have kidney problems
- if you have liver problems
- if you have prolonged and/or painful erection
- if you have problems with controlling body temperature or overheating
- if you have an abnormally high level of the hormone prolactin in your blood or if you have a possible prolactin-dependent tumour
- if you or someone else in your family has a history of blood clots, as antipsychotics have been associated with formation of blood clots.

If you have any of these conditions, please talk to your doctor as he/she may want to adjust your dose or monitor you for a while.

As dangerously low numbers of a certain type of white blood cell needed to fight infection in your blood has been seen very rarely with patients taking this medicine, your doctor may check your white blood cell counts.

Even if you have previously tolerated oral paliperidone or risperidone, rarely allergic reactions occur after receiving injections of TREVICTA. Seek medical attention right away if you experience a rash, swelling of your throat, itching, or problems breathing as these may be signs of a serious allergic reaction.

This medicine may cause you to gain weight. Significant weight gain may be bad for your health. Your doctor should regularly measure your body weight.

As diabetes mellitus or worsening of pre-existing diabetes mellitus have been seen with patients taking this medicine, your doctor should check for signs of high blood sugar. In patients with pre-existing diabetes mellitus blood glucose should be monitored regularly.

Since this medicine may reduce your urge to vomit, there is a chance that it may mask the body's normal response to ingestion of toxic substances or other medical conditions.

During an operation on the eye for cloudiness of the lens (cataract), the pupil (the black circle in the middle of your eye) may not increase in size as needed. Also, the iris (the coloured part of the eye) may become floppy during surgery and that may lead to eye damage. If you are planning to have an operation on your eye, make sure you tell your eye doctor that you are taking this medicine.

Children and adolescents

Do not use this medicine in children and adolescents under 18 years of age. It is not known if it is safe and effective in these patients.

Other medicines and TREVICTA

Tell your doctor if you are taking, have recently taken or might take any other medicines.

Taking this medicine with carbamazepine (an anti-epileptic and mood stabiliser) may require a change to your dose of this medicine.

Since this medicine works primarily in the brain, using other medicines that work in the brain can cause an exaggeration of side effects such as sleepiness or other effects on the brain such as other psychiatric medications, opioids, antihistamines and sleep medication.

Since this medicine can lower blood pressure, care should be taken when this medicine is used with other medicines that lower blood pressure.

This medicine can reduce the effect of medicines against Parkinson's disease and restless legs syndrome (e.g., levodopa).

This medicine may cause an electrocardiogram (ECG) abnormality demonstrating a long time for an electrical impulse to travel through a certain part of the heart (known as "QT prolongation"). Other medicines that have this effect include some medicines used to treat the rhythm of the heart or to treat infection, and other antipsychotics.

If you have a history of seizures, this medicine may increase your chance of experiencing them. Other medicines that have this effect include some medicines used to treat depression or to treat infection, and other antipsychotics.

TREVICTA should be used with caution with medicines that increase the activity of the central nervous system (psychostimulants such as methylphenidate).

TREVICTA with alcohol

Alcohol should be avoided.

Pregnancy and breast-feeding

If you are pregnant or breast-feeding, think you may be pregnant or are planning to have a baby, ask your doctor or pharmacist for advice before taking this medicine. You should not use this medicine during pregnancy unless this has been discussed with your doctor. The following symptoms may occur in newborn babies of mothers that have used paliperidone in the last trimester (last three months of their pregnancy): shaking, muscle stiffness and/or weakness, sleepiness, agitation, breathing problems, and difficulty in feeding. If your baby develops any of these symptoms seek medical attention for your baby.

This medicine can pass from mother to baby through breast milk and may harm the baby. Therefore, you should not breast-feed when using this medicine.

Driving and using machines

Dizziness, extreme tiredness and vision problems may occur during treatment with this medicine (see section 4). This should be considered in cases where full alertness is required, e.g., when driving a car or handling machines.

TREVICTA contains sodium

This medicine contains less than 1 mmol sodium (23 mg) per dose, that is to say essentially 'sodium-free'.

3. How to use TREVICTA

This medicine is administered by your doctor or other healthcare professional. Your doctor will tell you when you need your next injection. It is important not to miss your scheduled dose. If you cannot keep your appointment with the doctor, make sure you call him right away so another appointment can be made as soon as possible.

You will receive an injection of TREVICTA in the upper arm or buttocks once every 3 months.

Depending on your symptoms, your doctor may increase or decrease the amount of medicine you receive at the time of your next scheduled injection.

Patients with kidney problems

If you have mild kidney problems your doctor will determine the appropriate dose of TREVICTA based on the dose of 1-monthly paliperidone palmitate injectable that you have been receiving. If you have moderate or severe kidney problems this medicine should not be used.

Elderly

Your doctor will determine your dose of this medicine if your kidney function is reduced.

If you are given more TREVICTA than needed

This medicine will be given to you under medical supervision; it is, therefore, unlikely that you will be given too much.

Patients who have been given too much paliperidone may experience the following symptoms: drowsiness or sedation, fast heart rate, low blood pressure, an abnormal electrocardiogram (electrical tracing of the heart), or slow or abnormal movements of the face, body, arms or legs.

If you stop using TREVICTA

If you stop receiving your injections, your symptoms of schizophrenia may get worse. You should not stop using this medicine unless told to do so by your doctor.

If you have any further questions on the use of this medicine, ask your doctor or pharmacist.

4. Possible side effects

Like all medicines, this medicine can cause side effects, although not everybody gets them.

Tell your doctor immediately if you:

- experience blood clots in the veins, especially in the legs (symptoms include swelling, pain, and redness in the leg), which may travel through blood vessels to the lungs causing chest pain and difficulty breathing. If you notice any of these symptoms seek medical advice immediately.
- have dementia and experience a sudden change in your mental state or sudden weakness or numbness of your face, arms or legs, especially on one side, or slurred speech, even for a short period of time. These may be signs of a stroke.
- experience fever, muscle stiffness, sweating or a lowered level of consciousness (a disorder called “Neuroleptic Malignant Syndrome”). Immediate medical treatment may be needed
- are a man and experience prolonged or painful erection. This is called priapism. Immediate medical treatment may be needed.
- experience involuntary rhythmic movements of the tongue, mouth and face. Withdrawal of paliperidone may be needed.
- experience a severe allergic reaction characterised by fever, swollen mouth, face, lip or tongue, shortness of breath, itching, skin rash and sometimes drop in blood pressure (amounting to an ‘anaphylactic reaction’). Even if you have previously tolerated oral risperidone or oral paliperidone, rarely allergic reactions occur after receiving injections of paliperidone.

- are planning to have an operation on your eye, make sure you tell your eye doctor that you are taking this medicine. During an operation on the eye for cloudiness of the lens (cataract), the iris (the coloured part of the eye) may become floppy during surgery (known as “floppy iris syndrome”) that may lead to eye damage.
- are aware of having dangerously low numbers of a certain type of white blood cell needed to fight infection in your blood.

The following side effects may happen:

Very common side effects: may affect more than 1 in 10 people

- difficulty falling or staying asleep.

Common side effects: may affect up to 1 in 10 people

- common cold symptoms, urinary tract infection, feeling like you have the flu
- TREVICTA can raise your levels of a hormone called "prolactin" found on a blood test (which may or may not cause symptoms). When symptoms of high prolactin occur, they may include: (in men) breast swelling, difficulty in getting or maintaining erections, or other sexual dysfunction; (in women) breast discomfort, leakage of milk from the breasts, missed menstrual periods, or other problems with your cycle.
- high blood sugar, weight gain, weight loss, decreased appetite
- irritability, depression, anxiety
- feeling restless
- parkinsonism: This condition may include slow or impaired movement, sensation of stiffness or tightness of the muscles (making your movements jerky), and sometimes even a sensation of movement "freezing up" and then restarting. Other signs of parkinsonism include a slow shuffling walk, a tremor while at rest, increased saliva and/or drooling, and a loss of expression on the face.
- restlessness, feeling sleepy, or less alert
- dystonia: This is a condition involving slow or sustained involuntary contraction of muscles. While it can involve any part of the body (and may result in abnormal posture), dystonia often involves muscles of the face, including abnormal movements of the eyes, mouth, tongue or jaw.
- dizziness
- dyskinesia: This is a condition involving involuntary muscle movements, and can include repetitive, spastic or writhing movements, or twitching.
- tremor (shaking)
- headache
- rapid heart rate
- high blood pressure
- cough, stuffy nose
- abdominal pain, vomiting, nausea, constipation, diarrhoea, indigestion, toothache
- increased liver transaminases in your blood
- bone or muscle ache, back pain, joint pain
- loss of menstrual periods
- fever, weakness, fatigue (tiredness)
- a reaction at the injection site, including itching, pain or swelling.

Uncommon side effects: may affect up to 1 in 100 people

- pneumonia, infection of the chest (bronchitis), infection of the breathing passages, sinus infection, bladder infection, ear infection, tonsillitis, fungal infection of the nails, infection of the skin, abscess under the skin
- white blood cell count decreased, decrease in the type of white blood cells that help to protect you against infection, anaemia
- allergic reaction
- diabetes or worsening of diabetes, increased insulin (a hormone that controls blood sugar levels) in your blood

- increased appetite
- loss of appetite resulting in malnutrition and low body weight
- high blood triglycerides (a fat), increased cholesterol in your blood
- sleep disorder, elated mood (mania), decreased sexual drive, nervousness, nightmares
- tardive dyskinesia (twitching or jerking movements that you cannot control in your face, tongue, or other parts of your body). Tell your doctor immediately if you experience involuntary rhythmic movements of the tongue, mouth and face. Withdrawal of this medicine may be needed.
- fainting, a restless urge to move parts of your body, dizziness upon standing, disturbance in attention, problems with speech, loss or abnormal sense of taste, reduced sensation of skin to pain and touch, a sensation of tingling, pricking, or numbness of skin
- blurry vision, eye infection or "pink eye", dry eye
- sensation of spinning (vertigo), ringing in the ears, ear pain
- an interruption in conduction between the upper and lower parts of the heart, abnormal electrical conduction of the heart, prolongation of the QT interval from your heart, rapid heartbeat upon standing, slow heart rate, abnormal electrical tracing of the heart (electrocardiogram or ECG), a fluttering or pounding feeling in your chest (palpitations)
- low blood pressure, low blood pressure upon standing (consequently, some people taking this medicine may feel faint, dizzy, or may pass out when they stand up or sit up suddenly)
- shortness of breath, sore throat, nosebleeds
- abdominal discomfort, stomach or intestinal infection, difficulty swallowing, dry mouth, excessive passing of gas or wind
- increased GGT (a liver enzyme called gamma-glutamyltransferase) in your blood, increased liver enzymes in your blood
- hives (or "nettle rash"), itching, rash, hair loss, eczema, dry skin, skin redness, acne
- an increase of CPK (creatine phosphokinase) in your blood, an enzyme which is sometimes released with muscle breakdown
- muscle spasms, joint stiffness, muscle weakness
- incontinence (lack of control) of urine, frequent passing of urine, pain when passing urine
- erectile dysfunction, ejaculation disorder, missed menstrual periods or other problems with your cycle (females), development of breasts in men, sexual dysfunction, breast pain, leakage of milk from the breasts
- swelling of the face, mouth, eyes, or lips, swelling of the body, arms, or legs
- an increase in body temperature
- a change in the way you walk
- chest pain, chest discomfort, feeling unwell
- hardening of the skin
- fall.

Rare side effects: may affect up to 1 in 1,000 people

- eye infection
- skin inflammation caused by mites, flaky, itchy scalp or skin
- increase in eosinophils (a type of white blood cell) in your blood
- decrease in platelets (blood cells that help you stop bleeding)
- inappropriate secretion of a hormone that controls urine volume
- sugar in the urine
- life threatening complications of uncontrolled diabetes
- low blood sugar
- excessive drinking of water
- confusion
- shaking of the head
- not moving or responding while awake (catatonia)
- sleep walking
- lack of emotion
- inability to reach orgasm

- neuroleptic malignant syndrome (confusion, reduced or loss of consciousness, high fever, and severe muscle stiffness), blood vessel problems in the brain, including sudden loss of blood supply to brain (stroke or "mini" stroke), unresponsive to stimuli, loss of consciousness, low level of consciousness, convulsion (fits), balance disorder
- abnormal coordination
- glaucoma (increased pressure within the eyeball)
- problems with movement of your eyes, eye rolling, oversensitivity of the eyes to light, increased tears, redness of the eyes
- atrial fibrillation (an abnormal heart rhythm), irregular heartbeat
- blood clots in the veins especially in the legs (symptoms include swelling, pain and redness in the leg). If you notice any of these symptoms seek medical advice immediately
- blood clot in the lungs causing chest pain and difficulty in breathing. If you notice any of these symptoms seek medical advice immediately.
- flushing
- trouble breathing during sleep (sleep apnoea)
- lung congestion, congestion of breathing passages, wheezing
- crackly lung sounds
- inflammation of the pancreas, swollen tongue, stool incontinence, very hard stool
- a blockage in the bowels
- chapped lips
- rash on skin related to drug, thickening of skin, dandruff
- joint swelling
- inability to pass urine
- breast discomfort, enlargement of the glands in your breasts, breast enlargement
- vaginal discharge
- priapism (a prolonged penile erection that may require surgical treatment)
- very low body temperature, chills, feeling thirsty
- symptoms of drug withdrawal
- accumulation of pus caused by infection at injection site, deep skin infection, a cyst at the injection site, bruising at injection site.

Not known: frequency cannot be estimated from the available data

- dangerously low numbers of a certain type of white blood cell needed to fight infection in your blood
- severe allergic reaction characterised by fever, swollen mouth, face, lip or tongue, shortness of breath, itching, skin rash and sometimes drop in blood pressure
- dangerously excessive intake of water
- sleep-related eating disorder
- coma due to uncontrolled diabetes
- fast, shallow breathing, pneumonia caused by inhaling food, voice disorder
- decreased oxygen in parts of your body (because of decreased blood flow)
- lack of bowel movement that causes blockage
- yellowing of the skin and the eyes (jaundice)
- severe or life-threatening rash with blisters and peeling skin that may start in and around the mouth, nose, eyes and genitals and spread to other areas of the body (Stevens-Johnson syndrome or toxic epidermal necrolysis)
- serious allergic reaction with swelling that may involve the throat and lead to difficulty breathing
- skin discolouration
- abnormal posture
- newborn babies born to mothers who have taken TREVICTA during pregnancy may experience side effects of the drug and/or withdrawal symptoms, such as irritability, slow, or sustained muscle contractions, shaking, sleepiness, breathing, or feeding problems
- a decrease in body temperature
- dead skin cells at injection site, an ulcer at injection site.

Reporting of side effects

If you get any side effects, talk to your doctor, pharmacist or nurse. This includes any possible side effects not listed in this leaflet. By reporting side effects you can help provide more information on the safety of this medicine.

5. How to store TREVICTA

Keep this medicine out of the sight and reach of children.

Do not use this medicine after the expiry date which is stated on the carton. The expiry date refers to the last day of that month.

Do not store above 30°C.

Do not throw away any medicines via wastewater or household waste. Ask your pharmacist how to throw away medicines you no longer use. These measures will help to protect the environment.

6. Contents of the pack and other information

What TREVICTA contains

The active substance is paliperidone.

Each TREVICTA 175 mg pre-filled syringe contains 273 mg paliperidone palmitate in 0.88 mL.

Each TREVICTA 263 mg pre-filled syringe contains 410 mg paliperidone palmitate in 1.32 mL.

Each TREVICTA 350 mg pre-filled syringe contains 546 mg paliperidone palmitate in 1.75 mL.

Each TREVICTA 525 mg pre-filled syringe contains 819 mg paliperidone palmitate in 2.63 mL.

The other ingredients are:

Polysorbate 20

Polyethylene glycol 4 000

Citric acid monohydrate

Sodium dihydrogen phosphate monohydrate

Sodium hydroxide (for pH adjustment)

Water for injections

What TREVICTA looks like and contents of the pack

TREVICTA is a white to off-white prolonged release suspension for injection in a pre-filled syringe that your doctor or nurse will shake vigorously to resuspend the suspension before it is given as an injection.

Each pack contains 1 pre-filled syringe and 2 needles.

Not all pack sizes may be marketed.

Marketing Authorisation Holder

Janssen-Cilag International NV

Turnhoutseweg 30

B-2340 Beerse

Belgium

Manufacturer

Janssen Pharmaceutica NV

Turnhoutseweg 30

B-2340 Beerse

Belgium

This leaflet was last revised in 25 May 2023

“To contact us , please visit our website www.janssen.com/contact-us “

THIS IS A MEDICAMENT

- Medicament is a product which affects your health and its consumption contrary to instructions is dangerous for you.
- Follow strictly the doctor's prescription, the method of use and the instructions of the pharmacist who sold the medicament. The doctor and the pharmacist are the experts in medicines, their benefits and risks.
- Do not by yourself interrupt the period of treatment prescribed.
- Do not repeat the same prescription without consulting your doctor.
- Keep all medicaments out of the reach of children

Council of Arab Health Ministers, Union of Arab Pharmacists

Information intended for medical or healthcare professionals

The following information is intended for medical or healthcare professionals only and should be read by the medical or healthcare professional in conjunction with the full prescribing information (Summary of Product Characteristics).



Administer every 3 months



Shake syringe vigorously for at least 15 seconds

For intramuscular injection only. Do not administer by any other route.

Important

Read complete instructions prior to use. TREVICTA requires close attention to these step-by-step Instructions for Use to help ensure successful administration.

TREVICTA should be administered by a healthcare professional as a single injection. **DO NOT** divide dose into multiple injections.

TREVICTA is intended for intramuscular use only. Inject slowly, deep into the muscle taking care to avoid injection into a blood vessel.

Dosing

TREVICTA should be administered **once every 3 months**.

Preparation

Peel off the tab label from the syringe and place in patient record.

TREVICTA requires **longer and more vigorous shaking** than 1-monthly paliperidone palmitate injectable. Shake the syringe vigorously, with the syringe tip pointing up, for **at least 15 seconds within 5 minutes prior to administration** (see Step 2).

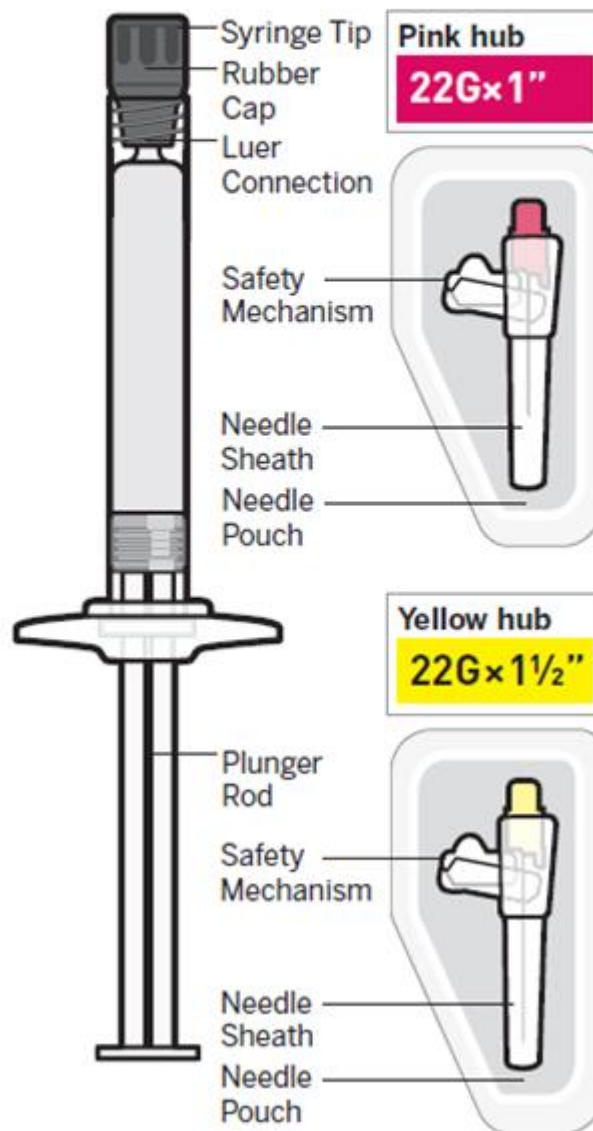
Thin Wall Safety Needle Selection

Thin wall (TW) safety needles are designed to be used with TREVICTA. It is important to **only use the needles provided in the TREVICTA pack**.

Dose pack contents

Prefilled
Syringe

Thin Wall
Safety Needles

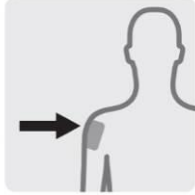


1

Select needle

Needle selection is determined by injection site and patient weight.

If administering a **Deltoid** injection



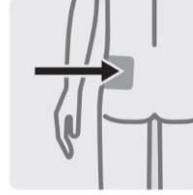
If patient weighs:
Less than 90 kg
pink hub

22G × 1"

90 kg or more
yellow hub

22G × 1½"

If administering a **Gluteal** injection

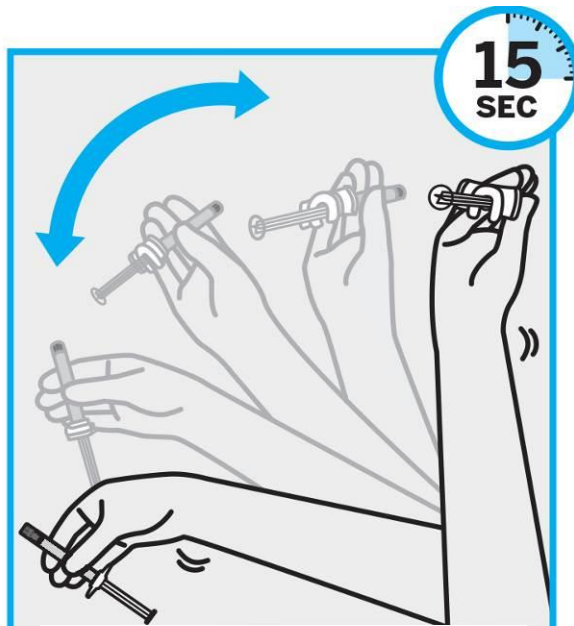


Regardless of patient weight:
yellow hub

22G × 1½"



Immediately discard the unused needle in an approved sharps container. Do not save for future use.



SHAKE VIGOROUSLY for at least 15 seconds

With the syringe tip pointing up, SHAKE VIGOROUSLY with a loose wrist for at least 15 seconds to ensure a homogeneous suspension.

NOTE: This medicine requires longer and more vigorous shaking than 1-monthly paliperidone palmitate injectable.



Proceed to the next step immediately after shaking. **If more than 5 minutes pass before injection, shake vigorously, with the syringe tip pointing up, again** for at least 15 seconds to re-suspend the medication.

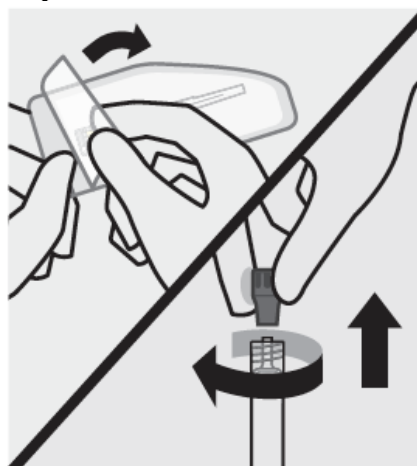
Check suspension



After shaking the syringe for at least 15 seconds, check the appearance of the suspension in the viewing window.

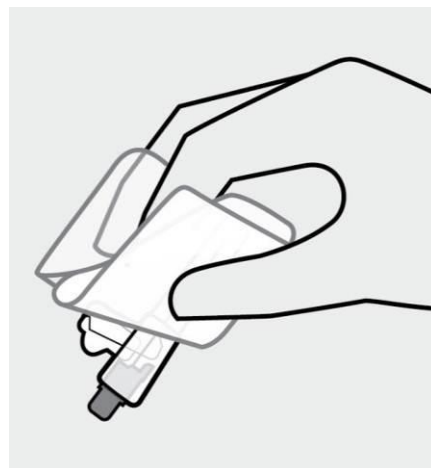
The suspension should appear uniform and milky white in colour.
It is also normal to see small air bubbles.

Open needle pouch and remove cap



First, open needle pouch by peeling the cover back half way. Place on a clean surface. Then, holding the syringe upright, twist and pull the rubber cap to remove.

Grasp needle pouch



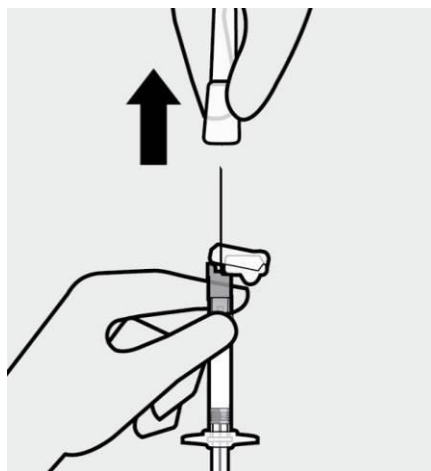
Fold back needle cover and plastic tray. Then, firmly grasp the needle sheath through the pouch, as shown.

Attach needle



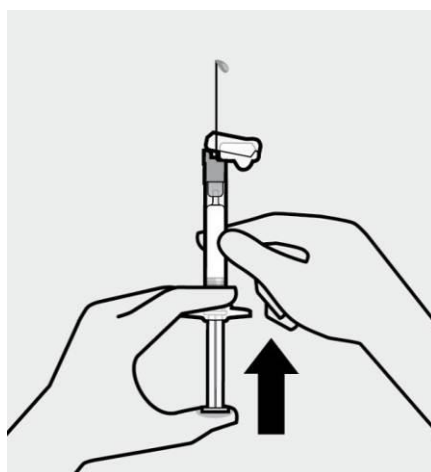
Hold the syringe pointing up. Attach the safety needle to the syringe using a gentle twisting motion to avoid needle hub cracks or damage. Always check for signs of damage or leakage prior to administration.

Remove needle sheath



Pull the needle sheath away from the needle in a straight motion.
Do not twist the sheath, as this may loosen the needle from the syringe.

Remove air bubbles

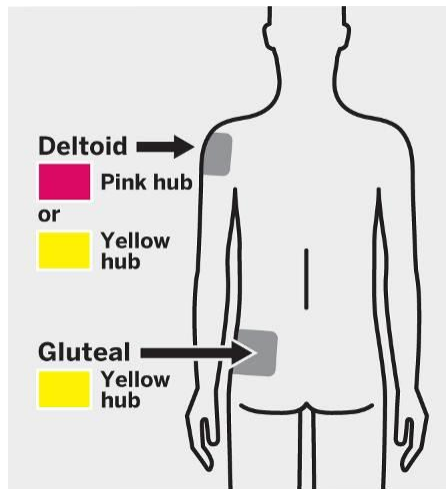


Hold the syringe upright and tap gently to make any air bubbles rise to the top. Slowly and carefully press plunger rod upward to remove air.

3

Inject

Inject dose



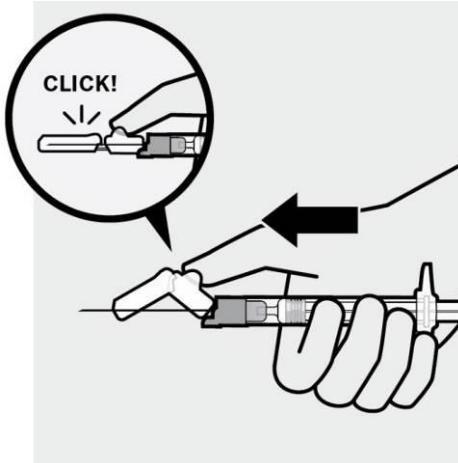
Slowly inject the entire contents of the syringe intramuscularly, deep into the selected deltoid or gluteal muscle.

Do not administer by any other route.

4

After injection

Secure needle



After the injection is complete, use your thumb or a flat surface to secure the needle in the safety mechanism. The needle is secure when a “click” sound is heard.

Dispose properly



Dispose of the syringe and unused needle in an approved sharps container.



Thin wall safety needles are designed specifically for use with TREVICTA. Unused needle should be discarded and not saved for future use.